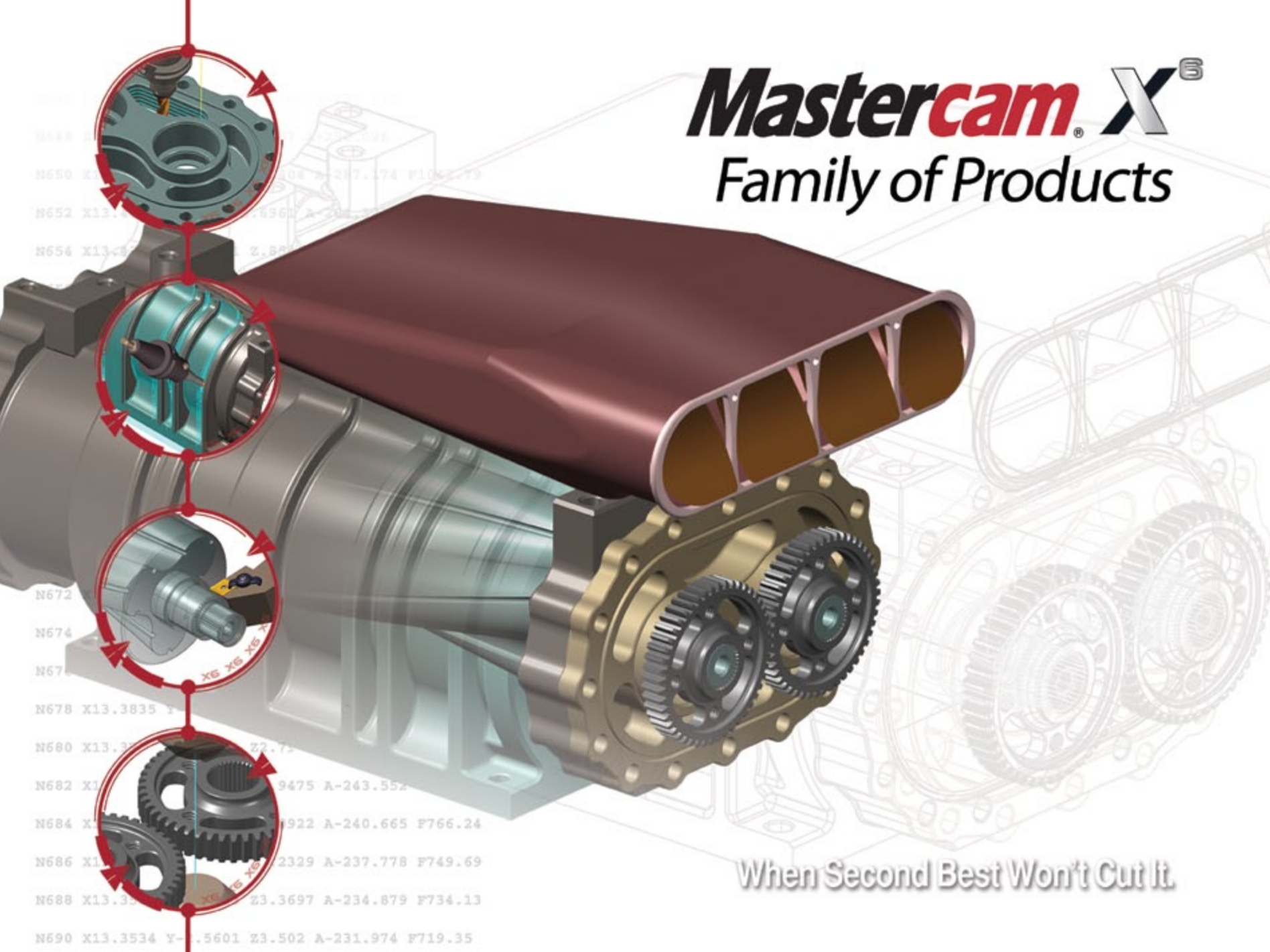


Mastercam X⁶

Family of Products



When Second Best Won't Cut It.

The perfect fit for your work

There is no job more important than the one you're working on. The new Mastercam X6 suite of CAD/CAM products is designed with real-world programming needs at the forefront, making your work easier and faster than ever before. And because Mastercam can grow with your needs, you have the long-term confidence, experience, and support from the #1 CAD/CAM developer in the world*.

Mastercam is 2- through 5-axis milling and routing, turning, wire EDM, artistic relief cutting, 2D and 3D design, surface, and solid modeling.

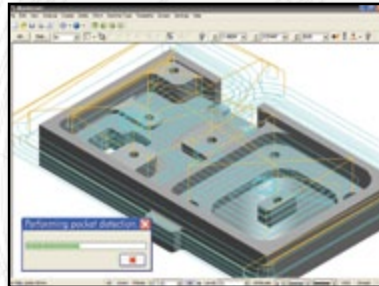
** Source: CIMdata, Inc.*

Mastercam Mill

Mastercam Mill Level 1

Associative CAD/CAM for 2½-axis machining and design. Includes Design functionality, plus:

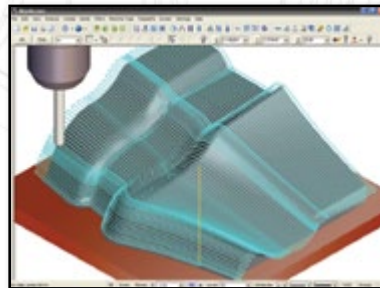
- Automated 2D Feature Based Machining on solids
- Flexible contour, pocket, and drilling
- CAD File Change Recognition
- Highly efficient Dynamic Milling
- Tombstone programming/multi-axis positioning
- In-process stock model
- Solids-based toolpath verification



Mastercam Mill Level 2

Associative CAD/CAM for limited 3-axis machining and design. Builds on Design and Mill Level 1 functionality, plus:

- Single surface and limited multisurface finishing
- Single surface and limited multisurface roughing
- Toolpath projection onto a complex surface



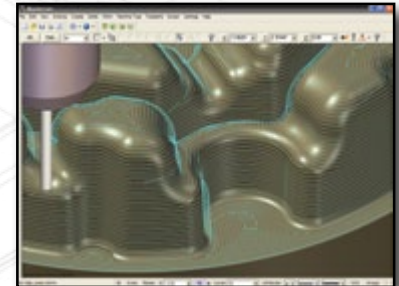
Why Choose Mastercam? Here are just a few reasons:

1. **Streamlined.** A remarkably easy interface has you cutting parts quickly.
2. **Comprehensive.** Get the most robust 2- through 5-axis toolpath generation available.
3. **Time-saving.** Mastercam's Dynamic Milling technology cuts machining time and tool wear.
4. **Smart.** Intelligent toolpaths and CAD Change Recognition know when your part is edited.
5. **Automated.** Feature Based Machining delivers push-button 2D programming.

Mastercam Mill Level 3

Associative CAD/CAM for full 3-axis machining and design. Builds on Mastercam Design, Level 1 & 2 functionality, plus:

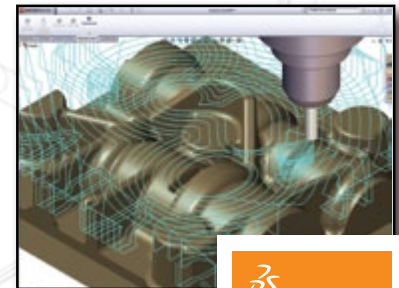
- Comprehensive, easy, and associative multisurface roughing and finishing
- High Speed Machining efficiently cuts complex parts
- OptiRough dramatically reduces roughing time
- Remaining stock removal
- Machine surfaces, solids, STL files, and wireframe



Mastercam® for SolidWorks®

Fully-integrated associative 3-axis machining that runs directly in SolidWorks 2009 (or later).

- High Speed Machining efficiently cuts complex parts
- Contouring, pocketing, and drilling, including automated Feature Based Machining
- Open Mastercam for SolidWorks files in Mastercam, complete with all toolpaths
- Familiar Mastercam Operations Manager and parameter screens



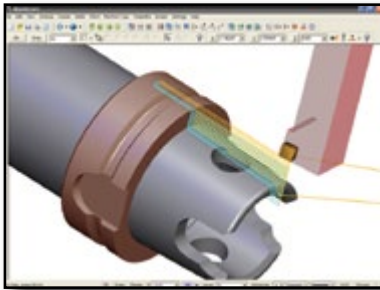
+ **Mastercam Multiaxis** Available as an Add-In. See back.



Mastercam Lathe

Associative CNC programming system for turning. Builds on Mastercam Design functionality, plus:

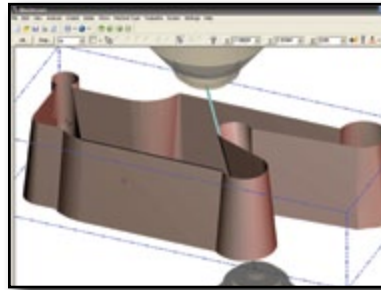
- Roughing, finishing, threading, grooving, boring, drilling, and cut off
- Editable tool, material, and operation libraries
- Automatic tool compensation
- Solids-based toolpath verification
- C- and Y-axis machining, with full multiaxis (Mill/Turn) capabilities when combined with Mastercam Mill



Mastercam Wire

Associative CAD/CAM for wire EDM. Builds on Mastercam Design functionality, plus:

- Advanced tapering in both 2-axis and 4-axis wirepath creation
- Advanced synchronization capabilities
- Efficient lead-ins and lead-outs
- Automatic corner filleting and skim cut definition
- Efficient tab creation and management
- Wirepath filtering significantly reduces program size

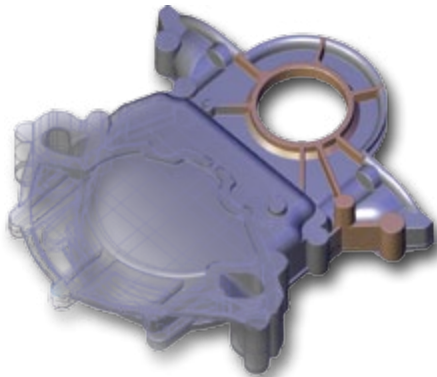


Mastercam Modeling

Mastercam Design

Powerful 3D CAD software also included in Mastercam Mill, Lathe, Router, and Wire.

- Easy geometry modeling and editing
- Advanced geometry creation, including NURBS curves and surfaces
- 2D and 3D associative dimensioning
- Surface extension, blending, trimming, splitting, and variable filletting



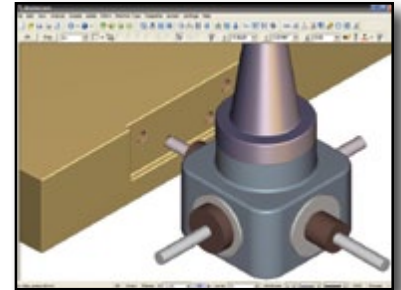
+ **Mastercam Solids** Available as an Add-In. See back.

Mastercam Router

Mastercam Router

Associative CAD/CAM specifically designed for routers. Builds on Mastercam Design functionality, plus:

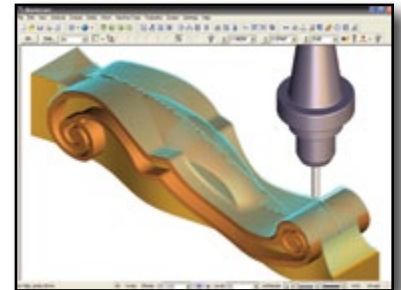
- Flexible 2D machining, including 2D Feature Based Machining on solids
- Tab creation and editing
- Advanced part and toolpath nesting
- Block drill and aggregate head support
- Support for raster-based files (JPEG, TIFF, and more)
- Powerful engraving



Mastercam Router Plus

Associative CAD/CAM for limited 3-axis router work. Builds on Mastercam Design and Router functionality, plus:

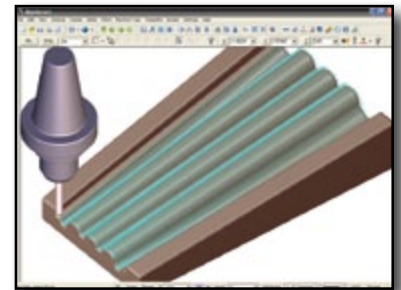
- Single surface and limited multisurface roughing
- Single surface and limited multisurface finishing
- Toolpath projection onto a complex surface



Mastercam Router Pro

Associative CAD/CAM for full 2-axis and 3-axis router work. Builds on Mastercam Design, Router, and Router Plus functionality, plus:

- Easy multisurface roughing
- Fast multisurface finishing
- Cleanup machining to reduce final hand work



Powerful Add-Ins for Mastercam

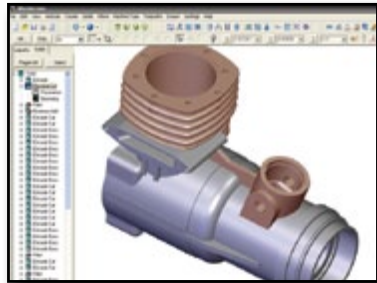
Mastercam Add-Ins are custom utilities developed for specialized applications. These time-saving tools include automatic core/cavity separation, EDM tool creation, cylinder head port programming, nesting, and engraving, to name just a few. A wide variety of Add-Ins are also available from Mastercam Business Partners.



+ Mastercam Solids (Add-In)

Fully integrated Parasolid®-based solid modeler that adds on to Mastercam Design, Mill, Lathe, Router, and Wire.

- Powerful solid construction techniques
- Fast shelling, filleting, and chamfering.
- Import and export Parasolid files.
- History tree for easy operation editing.
- Combine solids and surfaces in the same model.
- Fully integrated, associative machining when combined with Mastercam Mill.



+ Curve and Drill 5-Axis (Add-In)

Basic 5-axis cutting for trimming and drilling operations that can be added to Mill Level 1 for a cost-effective multi-axis package.

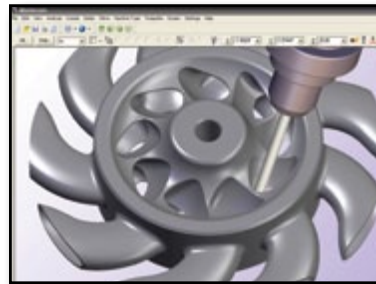
Mastercam
cnc software, inc.

671 Old Post Road Tolland, CT 06084 USA
(800) 228-2877 • (860) 875-5006
www.mastercam.com

+ Mastercam Multiaxis (Add-In)

Associative CAD/CAM for multi-axis machining that adds on to Mastercam Mill Level 3 or Mastercam Router Pro.

- 4- and 5-axis multisurface roughing and finishing.
- 5-axis contour cutting and trimming.
- Full control over all aspects of tool approach, motion, and retract.
- Full multi-axis solids-based verification.



+ Mastercam Art (Add-In)

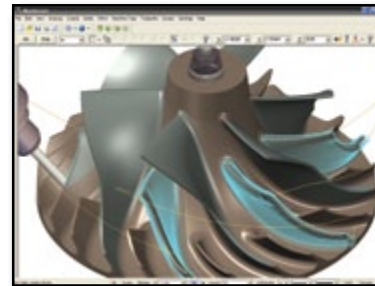
Artistic CAD/CAM for creative organic modeling and machining. Quickly bring 2D sketches, clip art, photos, and CAD files to life by crafting them on screen and cutting them with easy, specialized toolpaths.



+ Mastercam Blade Expert (Add-in)

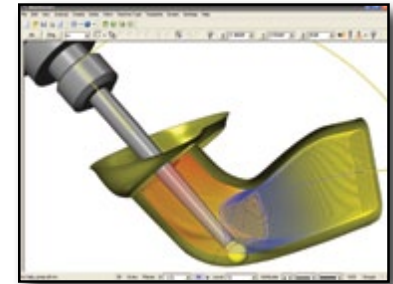
Specialized package dedicated to cutting multi-bladed parts and hubs.

- Specialized motion ensures clean cuts in splitters and leading / trailing edges.
- Complete tools for roughing between blades, semi-finishing and finishing the blades, and finishing the hub.



+ Mastercam Port Expert (Add-In)

Specialized multi-axis programming for precision head porting that provides dramatically faster port programming and machining time, along with smoother toolpath motion. Adds on to Mastercam Mill Level 3 or Mastercam Router Pro.



Data Translators

IGES, Parasolid®, SAT (ACIS solids), AutoCAD® (DXF, DWG) Autodesk® Inventor® (IPT, IAM), SolidWorks® (SLDPRT, SLDASM, SLDDRW), Solid Edge®, STEP, EPS, CADL, STL, VDA, and ASCII translators included. Direct translators for CATIA®, Pro/E®, and more. Mastercam Direct puts a Mastercam launcher in your SolidWorks, Solid Edge, or AutoCAD Inventor toolbars.

System Requirements

- **Processor:** 2.5 GHz (minimum) 32-bit or 64-bit Intel®-compatible processor. Mastercam will automatically identify the processor and install either the 32-bit or 64-bit version.
- **Operating System:** Windows® XP, Windows Vista® (Business or Ultimate), or Windows 7 (Ultimate or Professional) including the latest service packs and recommended updates.
- **Memory:** 2 GB (minimum), 3 GB available hard disk space (minimum).
- **Graphics:** 256 MB OpenGL-compatible graphics card, 1280x1024 screen resolution minimum.
- **Mouse:** Windows-compatible 2- or 3-button mouse (or middle mouse wheel).

Mastercam® and Mastercam University™ are registered trademarks of CNC Software, Inc. ©Copyright 1983-2011. All rights reserved. SolidWorks is a registered trademark of DS SolidWorks Corporation. All other trademarks are property of their respective owners.